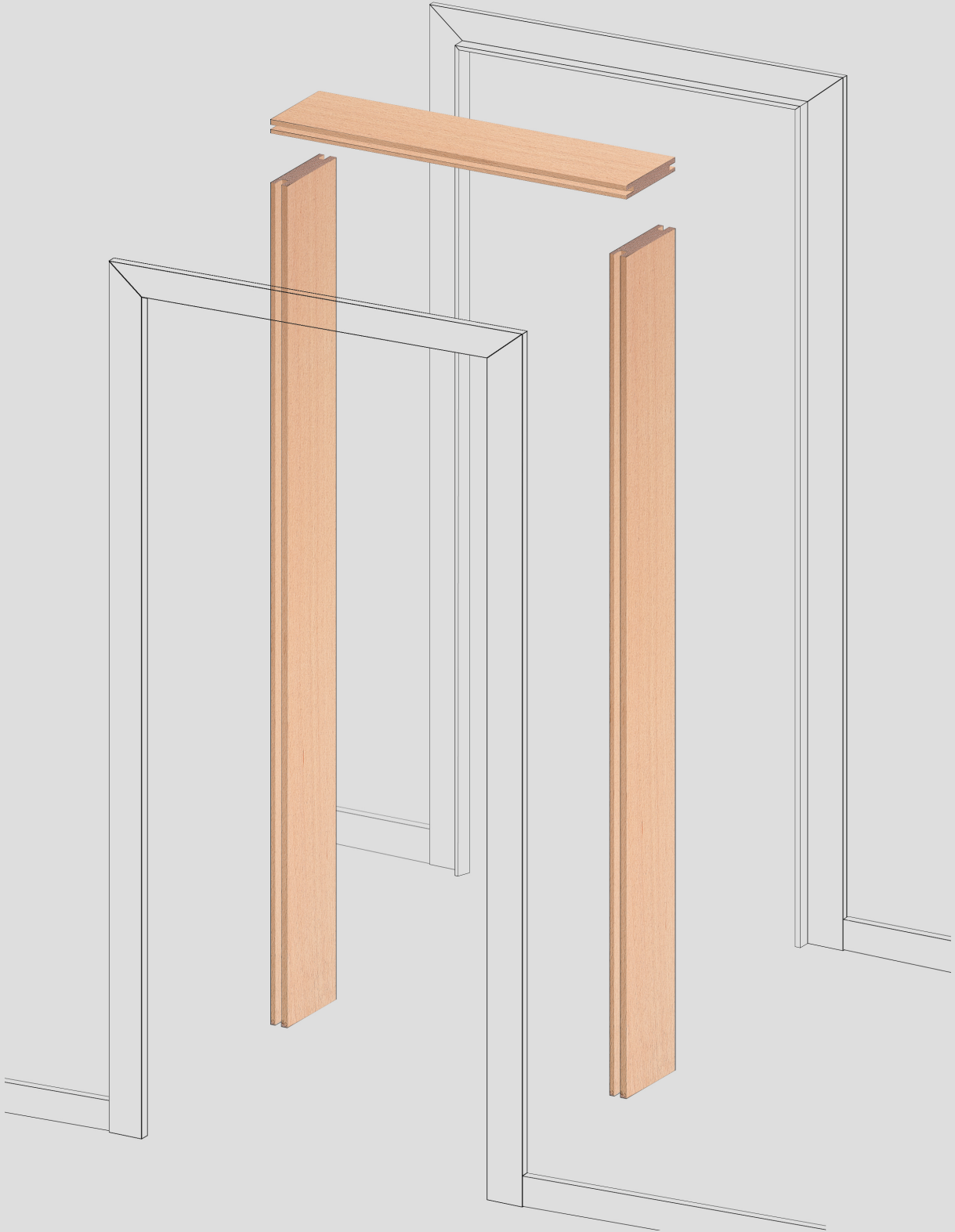


 Pollmeier

COMPONENTS Laminated

- Doorsframes -



Cut Costs. Improve Quality.
With high quality solidwooden C-Lams from Pollmeier.

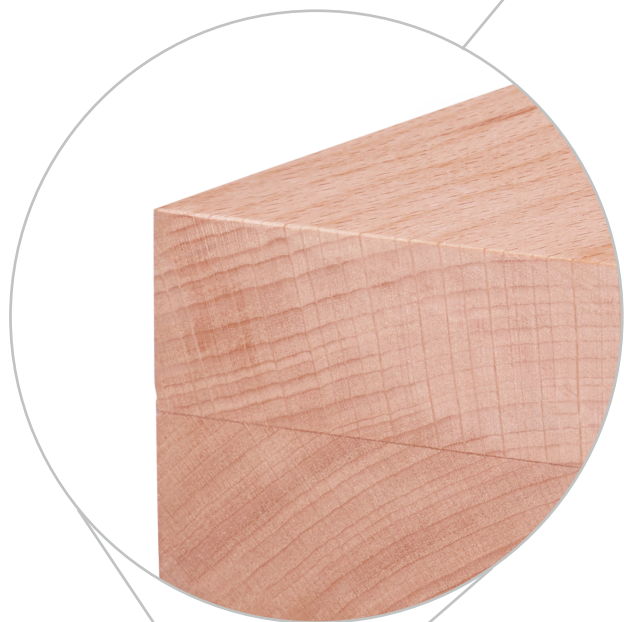
COMPONENTS Laminated (C-Lam) **Doors** is a high quality, semi-finished doorframe component, glued from two pieces of solid European Beech (*Fagus sylvatica*).



Precise dimensions



Lightly steamed to attain even and consistent colour



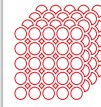
Face and edges free of defects



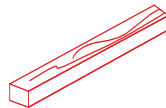
Kiln-dried and conditioned to 7-9% moisture content



Tangentially cut with an attractive year ring structure



Quality hardwood with a density of 720 kg/m^3



Planed surfaces - plain faces



D4 gluing - waterproof
Formaldehyd free, no impact
on fire resistance

Sorting AAX

FRONT



BACK



Sorting CCX

FRONT



BACK



Save cost and improve quality.

Your challenge

Production of solid door frames requires rather expensive raw material, that supplies long lengths.

To get to a semi-finished door component still significant work steps are required, which involve a waste factor of the expensive raw material.

Even when this is done, a part of the finished components may wrop, twist or cup, which will result in even more work steps and waste.

The result: high-cost door frames.

Our Solution

Pollmeier **C-Lam Doorsframes** are ready-to use, perfectly tailored to the production of interior door frames.

With our product you cut off work steps and reduce a lot of waste.

C-Lam Doorsframes have no wrop and no twist and are free of defects in the visible area–guaranteed quality for every single piece.

The result: cost-efficient door frames in high-quality.

Your advantages:

- _ Saving time and money
- _ High pull-out strength
- _ Reduced complaint rate
- _ Dimensions ready to use
- _ Excellent dimensional stability

Pollmeier COMPONENTS Laminated **Doors**

Overview - Dimensions

Sortings	Thickness	Widths	Lengths
AAX* CCX**	44 mm	80 mm, 100 mm, 125 mm, 150 mm	3.000 mm, 2.700 mm, 2.500 mm, 2.400 mm, 2.300 mm, 2.200 mm, 2.000 mm, 1.000 mm, 900 mm, 800 mm

Tolerances: Thickness: ± 0.5 mm | Widths: - 0 / +1 mm | Lengths: ± 2 mm per m

* See page 4
** See page 5

For architraves / lippings dimensions please check our cut to size info: <https://www.pollmeier.com/components/>

Cost comparison for door frame set

Doorframe	Quantity	Length [mm]	Width [mm]	Thickness [mm]	Cost per piece	Total cost per pieces
Total Cost of the Application						

Pollmeier COMPONENTS Laminated Doors
Beech. One Wood. So many possibilities.



The production site in Aschaffenburg is Europe's largest solid wood cutting plant.

Please contact us.
We are happy to support you!

sales@pollmeier.com
+49 36926 945 163

Our products are certified according to PEFC.

