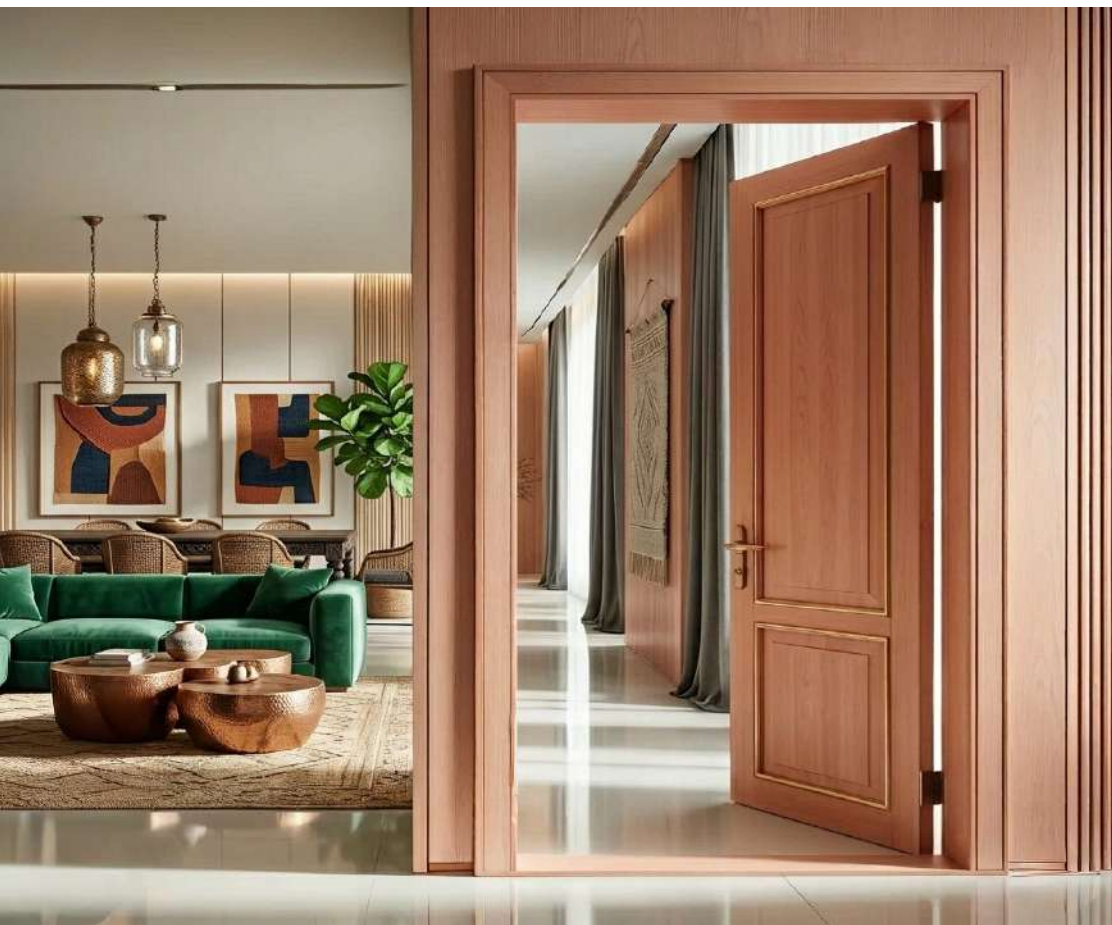


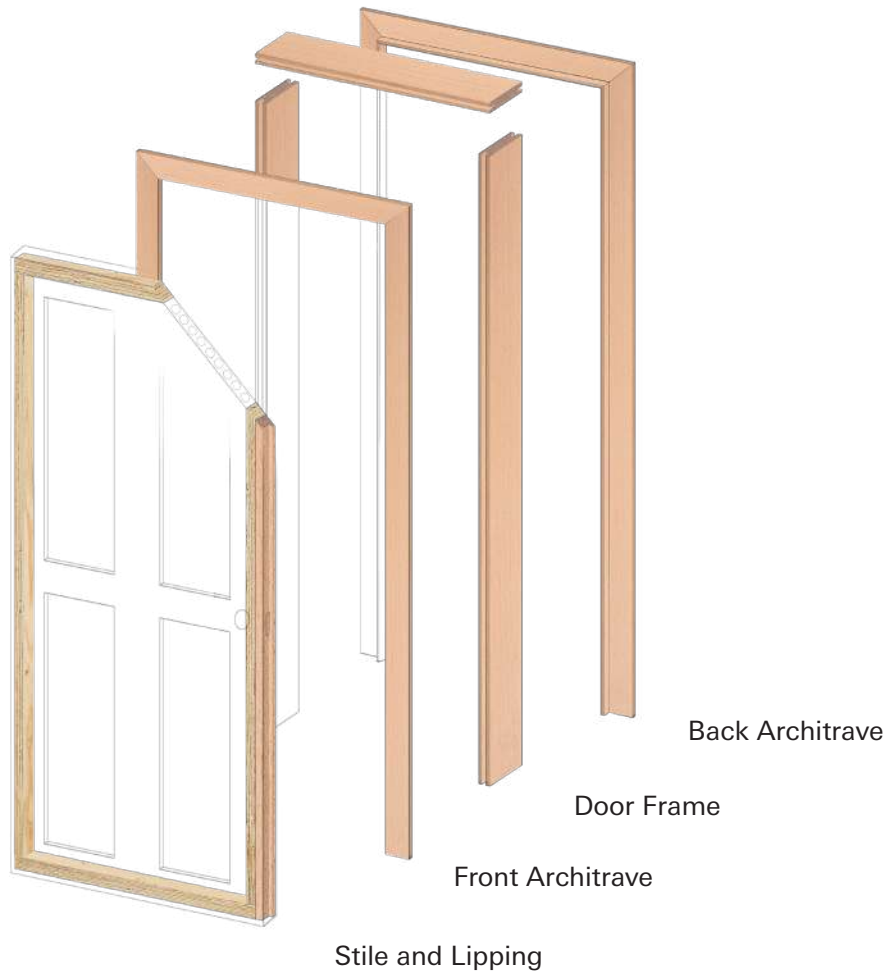
 **Pollmeier**

DOOR COMPONENTS



Save Costs and Improve Quality



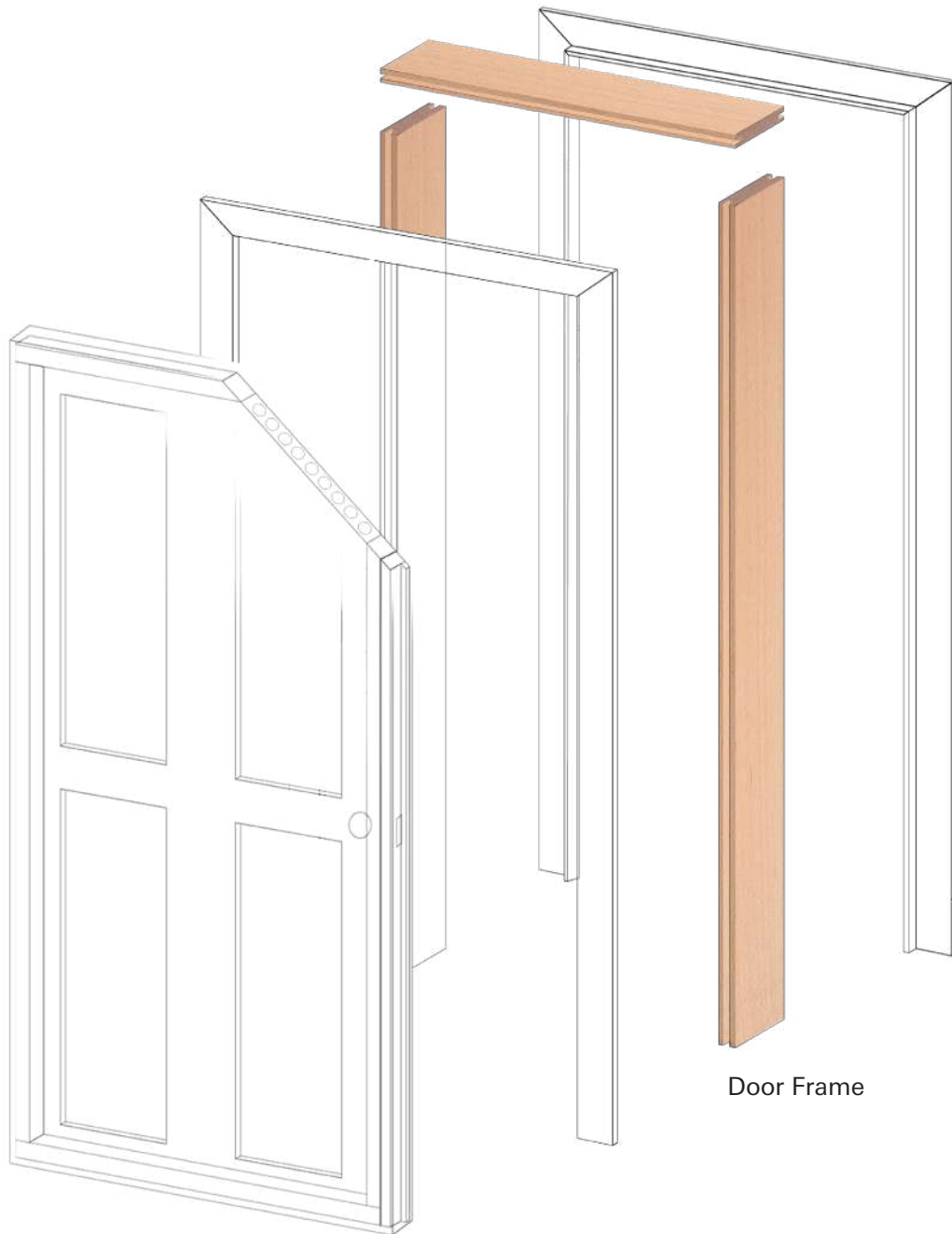


Door Components from Pollmeier

Doors are more than just a functional element of our daily surroundings; they meet numerous complex requirements in terms of safety, stability, and aesthetics. Therefore, doors and corresponding components rely heavily on the highest material demands. This is where Pollmeier comes in: we offer a wide-ranging portfolio of products specifically tailored to the needs of the door industry. From fire ratings and dimensional stability to bending strength – our solutions meet the diverse and demanding requirements of this sector.

However, the added value of our products does not stop at quality and performance. Pollmeier understands that efficient cost control is crucial for the success of our customers. By using our high-quality wood products, door manufacturers can not only enhance the quality and functionality of their products but also save significantly on production and material procurement costs.

Discover in this brochure how you can raise the quality and performance of your door production to the next level with Pollmeier as your solution-oriented partner.



Door Frame

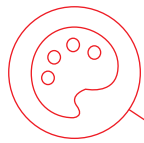
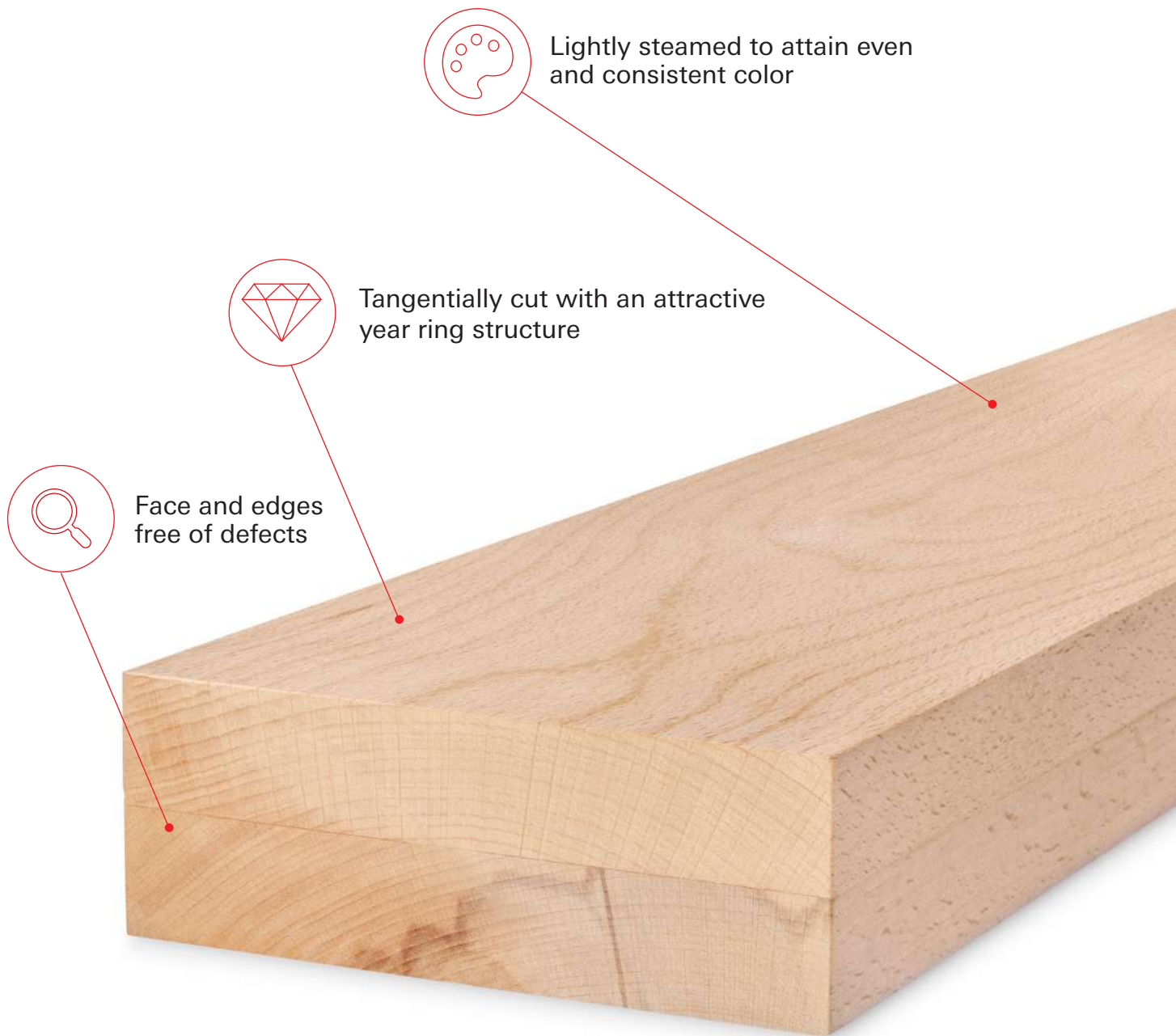


Property of the Final Product	Face-Glued COMPONENTS	Edge-Glued COMPONENTS
Material	Solid beech wood 2-layer face-glued	Solid beech wood 2- 3- 4-pieces edge-glued
Thickness [mm]	52 (planed to 44)	38 (sanded 36,0) 52 (sanded 48,5)
Widths [mm]	80, 100, 125, 150	98-350
Lengths [mm] short	900, 1.000, 1.100, 1.200	900, 1.000, 1.100, 1.200
long	1.700, 2.200, 2.250, 2.300, 2.400, 2.750	1.700, 2.200, 2.250, 2.300, 2.400, 2.750
Tolerances	Thickness: ± 0,5 mm Width: -0 / +1 mm Length: ± 2 mm per meter	Thickness: ± 0,3 mm Width: ± 0,5 mm Length: ± 1 mm per meter
Quality Feature*	3-sided visible quality The back will be without knots for up to 2/3 of all delivered goods combined.	3-sided visible quality The back will be without knots for up to 2/3 of all delivered goods combined.
Foiling / Wrapping	Suitable	Suitable
Painting / Staining	Suitable	Suitable
Suitability for Fire Doors	Suitable	Suitable
Moisture Content	7-9 %	7-9 %
Density	720 kg/m ³	720 kg/m ³

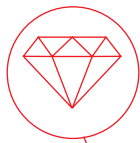
* Quality description: Face-Glued COMPONENTS on page 6 | Edge-Glued COMPONENTS page 10 | available in AAX and CCX

Face-Glued COMPONENTS for **Door Frames** are high quality, semi-finished door frame components, glued from two pieces of solid European Beech (*Fagus sylvatica*). It is ready to use, perfectly tailored to the production of interior door frames.

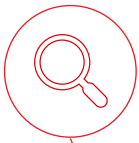
Our product is warp-resistant and free of defects in the visible areas (3 sides clear).



Lightly steamed to attain even and consistent color



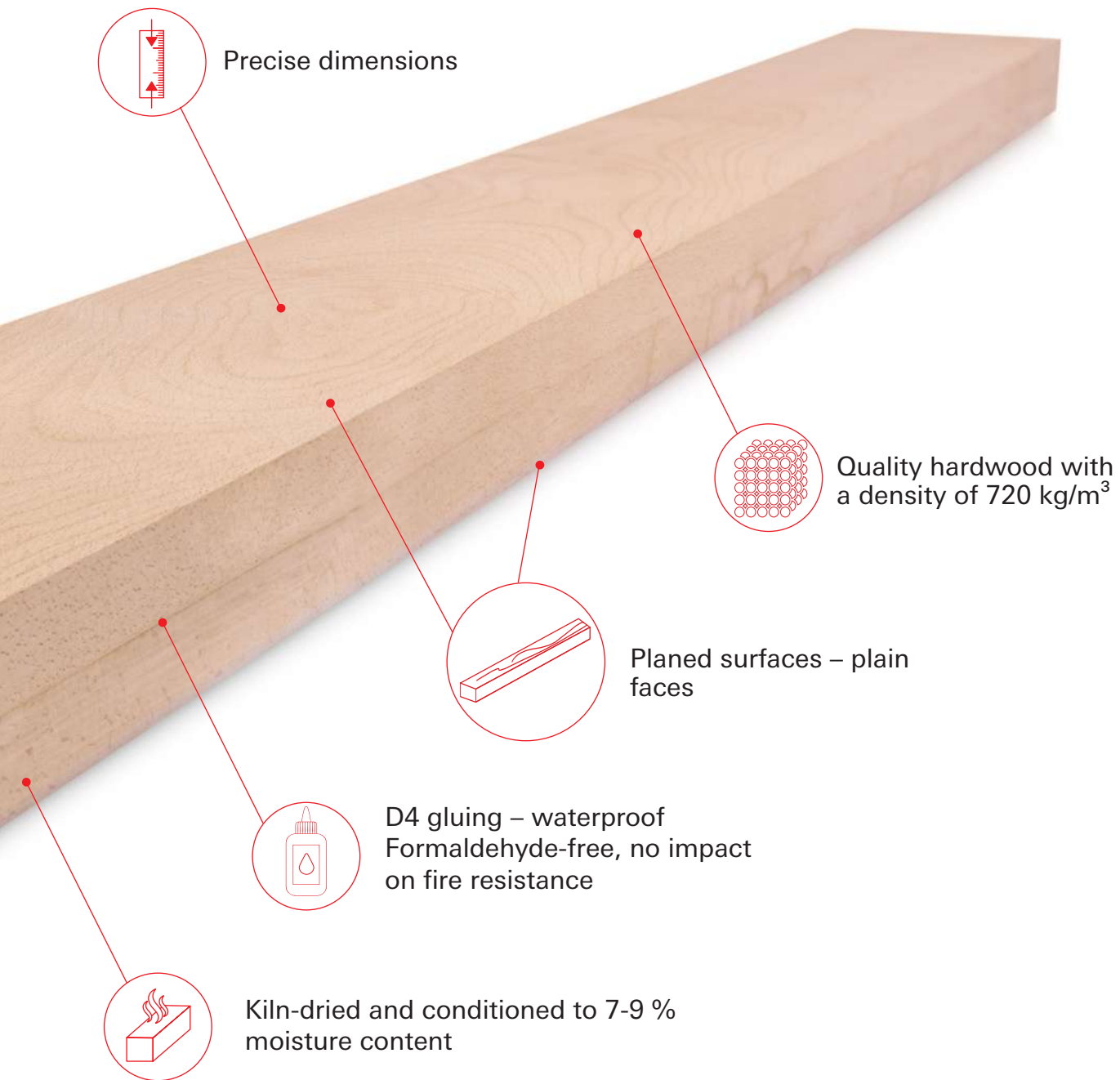
Tangentially cut with an attractive year ring structure



Face and edges free of defects

Overview – Dimensions

Sortings	Thickness [mm]	Widths [mm]	Lengths* [mm]
AAX CCX	52 (planed to 44)	80, 100, 125, 150	short: 900, 1.000, 1.100, 1.200 long: 1.700, 2.200, 2.250, 2.300, 2.400, 2.750
Tolerances	± 0,5 mm	- 0 / +1 mm	± 2 mm per m



Precise dimensions

Quality hardwood with a density of 720 kg/m³

Planned surfaces – plain faces

D4 gluing – waterproof
Formaldehyde-free, no impact
on fire resistance

Kiln-dried and conditioned to 7-9 %
moisture content

* Other lengths available on request.

FRONT



BACK



FRONT

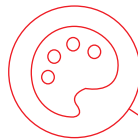
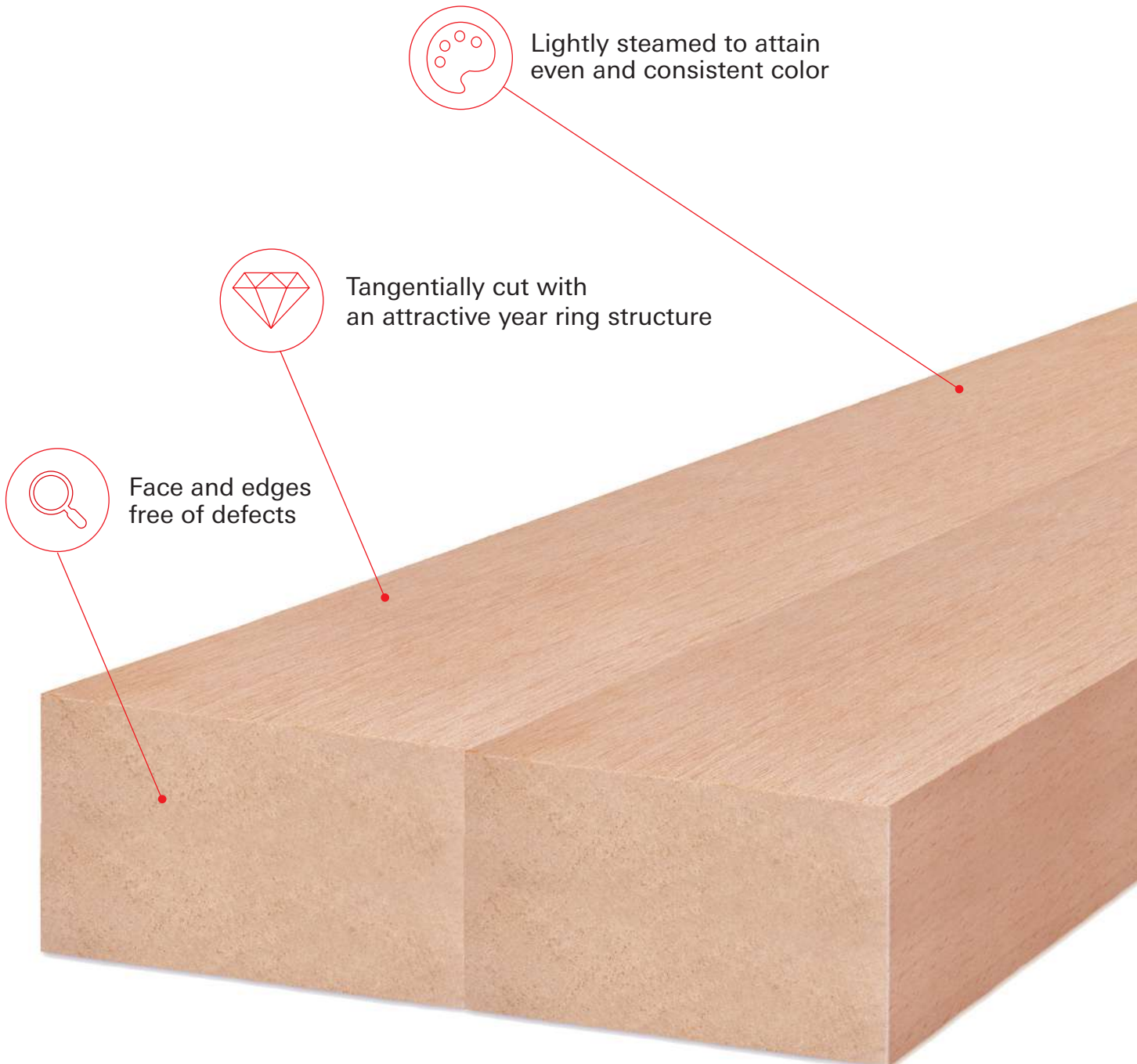


BACK

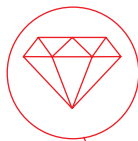


Edge-Glued COMPONENTS for **Door Frames** are high quality, semi-finished door frame components, edge-glued from two, three or four pieces of solid European Beech (*Fagus sylvatica*). It is ready to use, perfectly tailored to the production of interior door frames.

Our product is warp-resistant and free of defects in the visible areas (3 sides clear).



Lightly steamed to attain even and consistent color



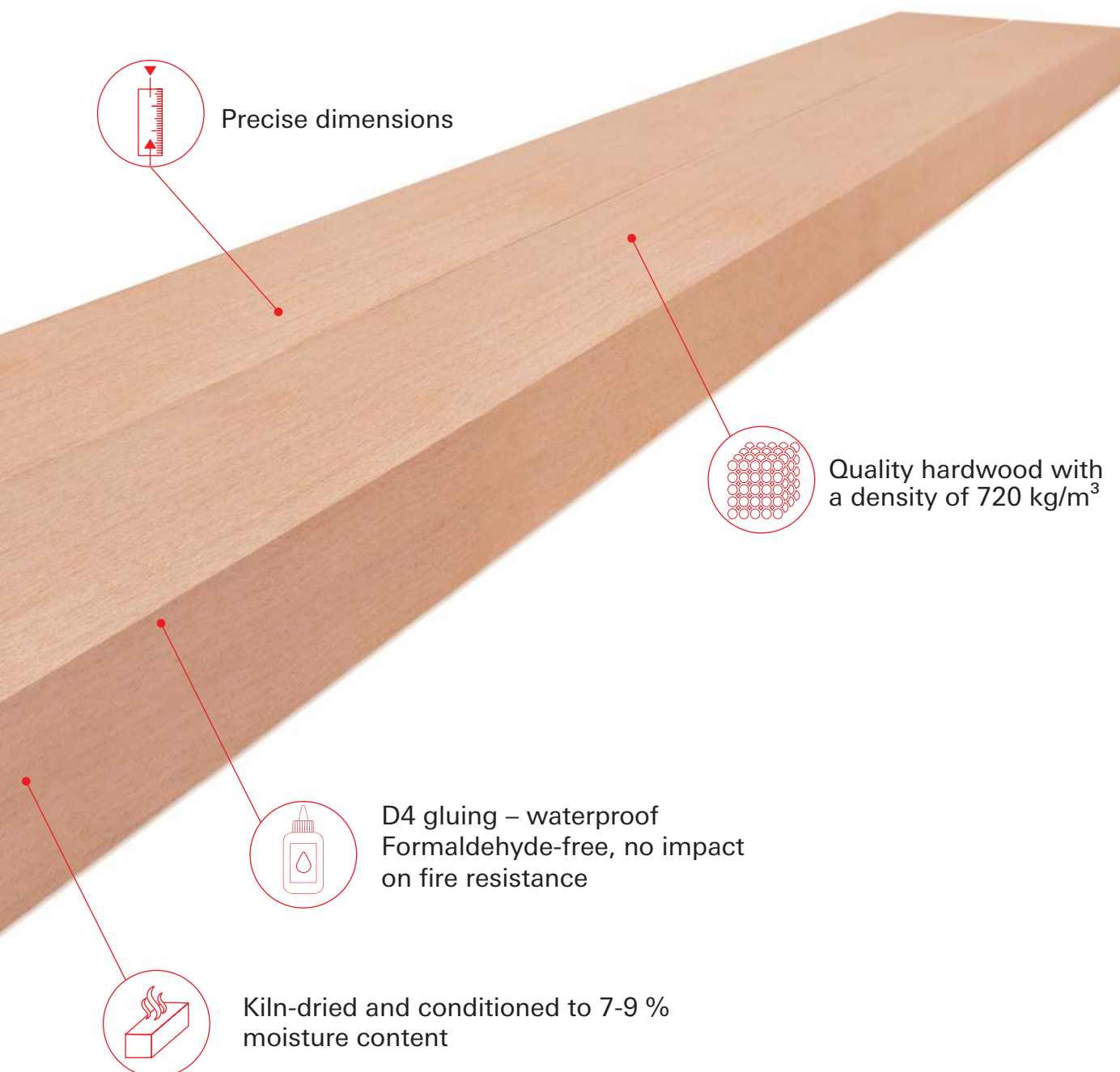
Tangentially cut with an attractive year ring structure



Face and edges free of defects

Overview – Dimensions

Sortings	Thickness [mm]	Widths [mm]	Lengths* [mm]
AAX	38 (sanded 36,0)	<u>2-piece:</u>	short: 900, 1.000, 1.100, 1.200
CCX	52 (sanded 48,5)	98, 108, 117, 129, 136, 148, 149, 160, 168, 180, 200, <u>3-piece:</u> 152, 178, 188, 209, 228, 240, 300 <u>4-piece:</u> 340	long: 1.700, 2.200, 2.250, 2.300, 2.400, 2.750
Tolerances	± 0,3 mm	± 0,5 mm	± 1 mm per meter



* Other lengths available on request.

Edge-Glued COMPONENTS

Overview – Dimensions

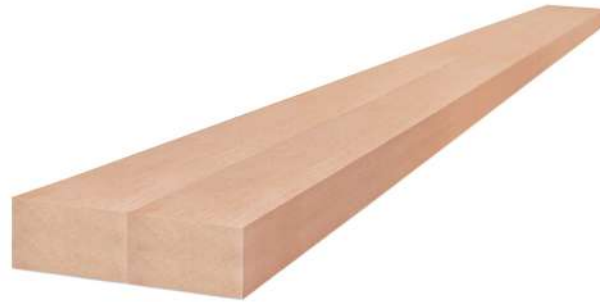
Available Gradings:

AAX

CCX

Thickness in mm:

38 (pre-sanded 36)



Length in mm:

2,750 | 2,400 | 2,300 | 2,250 | 2,200 | 1,700 | 1,200 | 1,100 | 1,000 | 900

Available width in mm for thickness 38 mm

Please note: widths of 125 mm & 150 mm also available as one full lamella

No of edge-glued CTS	Width in mm		Distribution of Components			
	invoiced	actual size				
2	90	90	45	45		
	108	108	54	54		
	113	113	45	68		
	125	125	45	80	OR	125
	136	136	68	68		
	145	145	45	100		
	148	148	68	80		
	150	150	150			
	160	160	80	80		
	168	168	68	100		
	180	180	80	100		
	200	200	100	100		
3	144	144	45	45	54	
	170	170	45	45	80	
	188	188	54	54	80	
	205	205	45	80	80	
	228	228	68	80	80	
	240	240	80	80	80	
	300	300	100	100	100	
4	340	340	80	80	80	100

Edge-Glued COMPONENTS

Overview – Dimensions

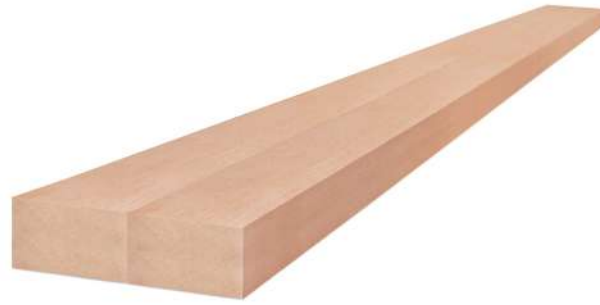
Available Gradings:

AAX

CCX

Thickness in mm:

52 (pre-sanded 48.5)



Length in mm:

2,750 | 2,400 | 2,300 | 2,250 | 2,200 | 1,700 | 1,200 | 1,100 | 1,000 | 900

Available width in mm for thickness 52 mm

Please note: widths of 125 mm & 150 mm also available as one full lamella

No of edge-glued CTS	Width in mm		Distribution of Components			
	invoiced	actual size				
2	100	98	49	49		
	108	108	54	54		
	117	117	49	68		
	125	125	125			
	130	129	49	80		
	136	136	68	68		
	148	148	68	80		
	150	149	49	100	OR 150	
	160	160	80	80		
	168	168	68	100		
	180	180	80	100		
	200	200	100	100		
3	150	152	49	49	54	
	178	178	49	49	80	
	188	188	54	54	80	
	209	209	49	80	80	
	228	228	68	80	80	
	240	240	80	80	80	
	300	300	100	100	100	
4	340	340	80	80	80	100

FRONT



BACK

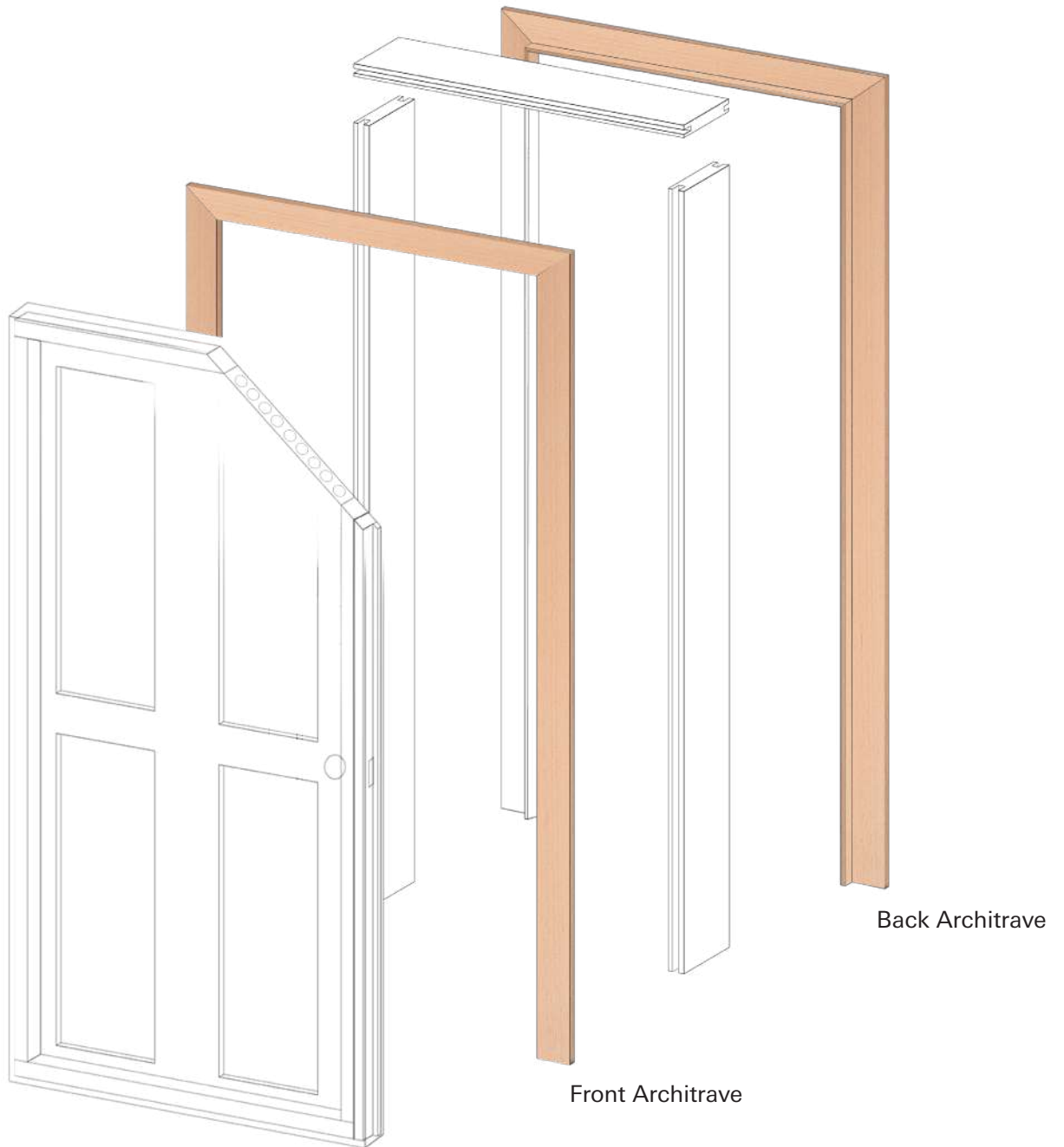


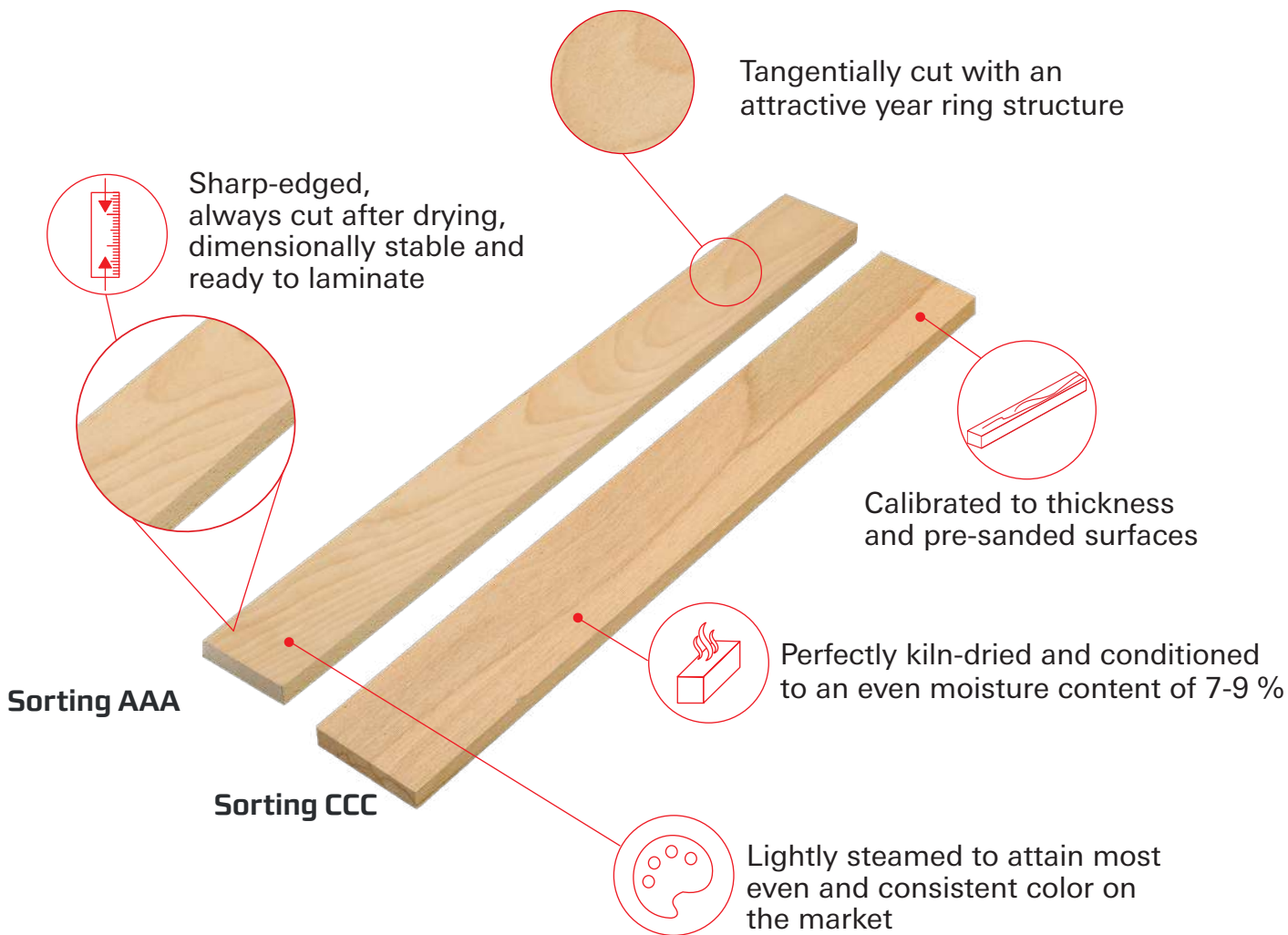
FRONT



BACK







Property of the Final Product	COMPONENTS
Material	Solid beech wood
Thickness [mm] invoiced (pre-sanded)	26 (23,8), 38 (36,0), 52 (48,5)
Widths [mm]	26 mm thickness: 42, 45, 54, 68, 80, 100, 125 38 mm thickness: 45, 54, 68, 80, 100, 125 52 mm thickness: 49, 68, 80, 100, 125
Lengths [mm]	800, 900, 1.000, 1.200 ,2.000, 2.100, 2.200, 2.250, 2.400, 2.750, 3.000*
Tolerances	Thickness: ± 0.3 mm Width: ± 0.5 mm Length: ± 1 mm per meter
Quality Feature	4-sided visible quality
Foiling/ Painting	Suitable
Moisture Content	7-9%
Density	720 kg/m ³

* further lengths available

- Clean front with occasional small defects on backside.
- Approx. 90% of the COMPONENTS are clean, pin knots not determined as a defect. Hence approx. 10% of the lamellas can have natural attributes.*

FRONT



BACK



* Possible natural attributes include: small knots, hit-and-miss > 1mm, mineral streaks in AAA, wane, color in AAA or blue stain in AAA. Photos of samples for the visualization of sorting requirements. Print and photo-related color deviations (from the original) possible.

- Clean front with occasional small defects on backside. Color variations permissible on all sides, i.e. red heart, blue stains, mineral streaks.
- Approx. 90% of the COMPONENTS are clean, color and pin knots not determined as a defect. Hence approx. 10% of the lamellas can have additional natural attributes.*

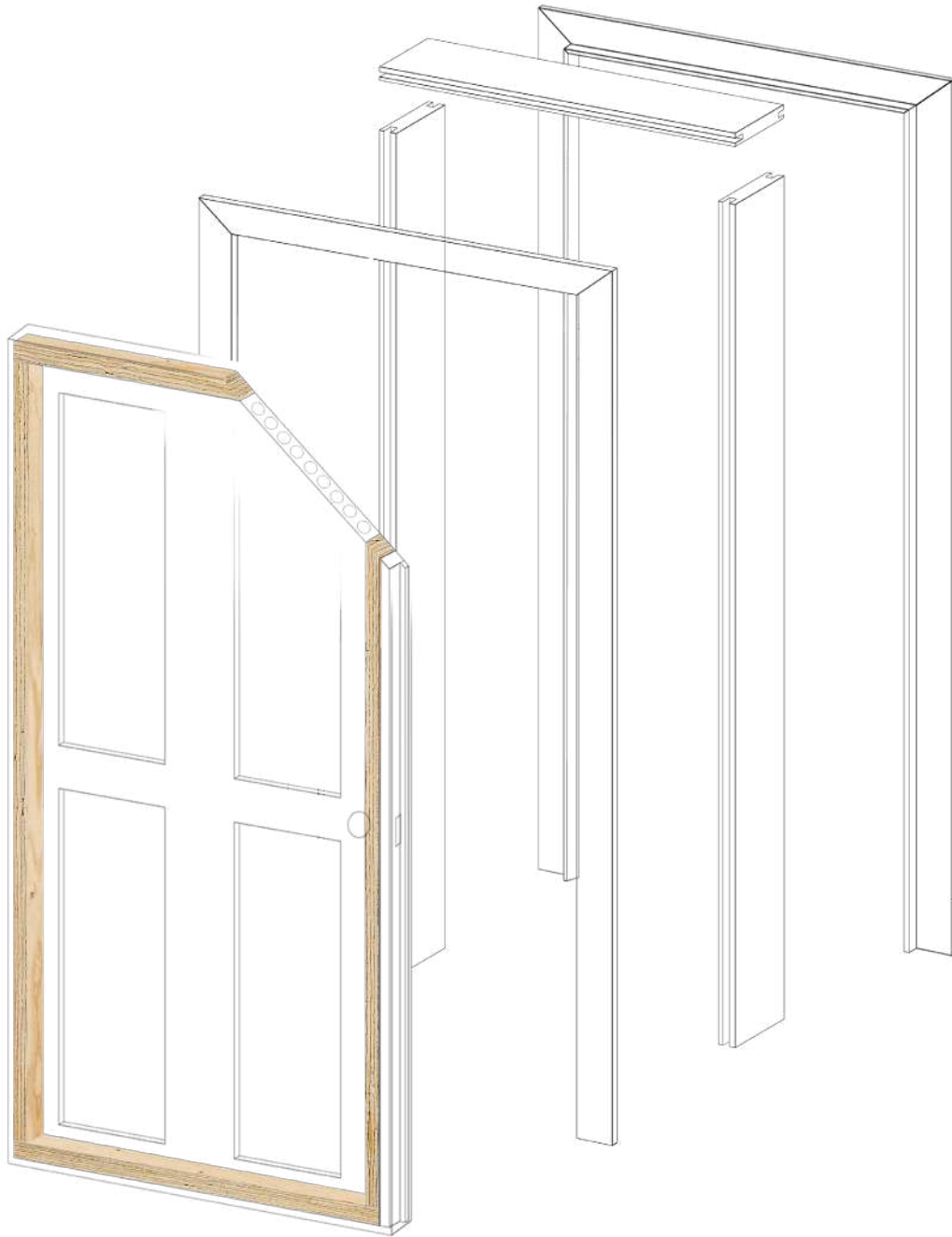
FRONT



BACK



* Possible natural attributes include: small knots, hit-and-miss > 1mm, mineral streaks in AAA, wane, color in AAA or blue stain in AAA. Photos of samples for the visualization of sorting requirements. Print and photo-related color deviations (from the original) possible.



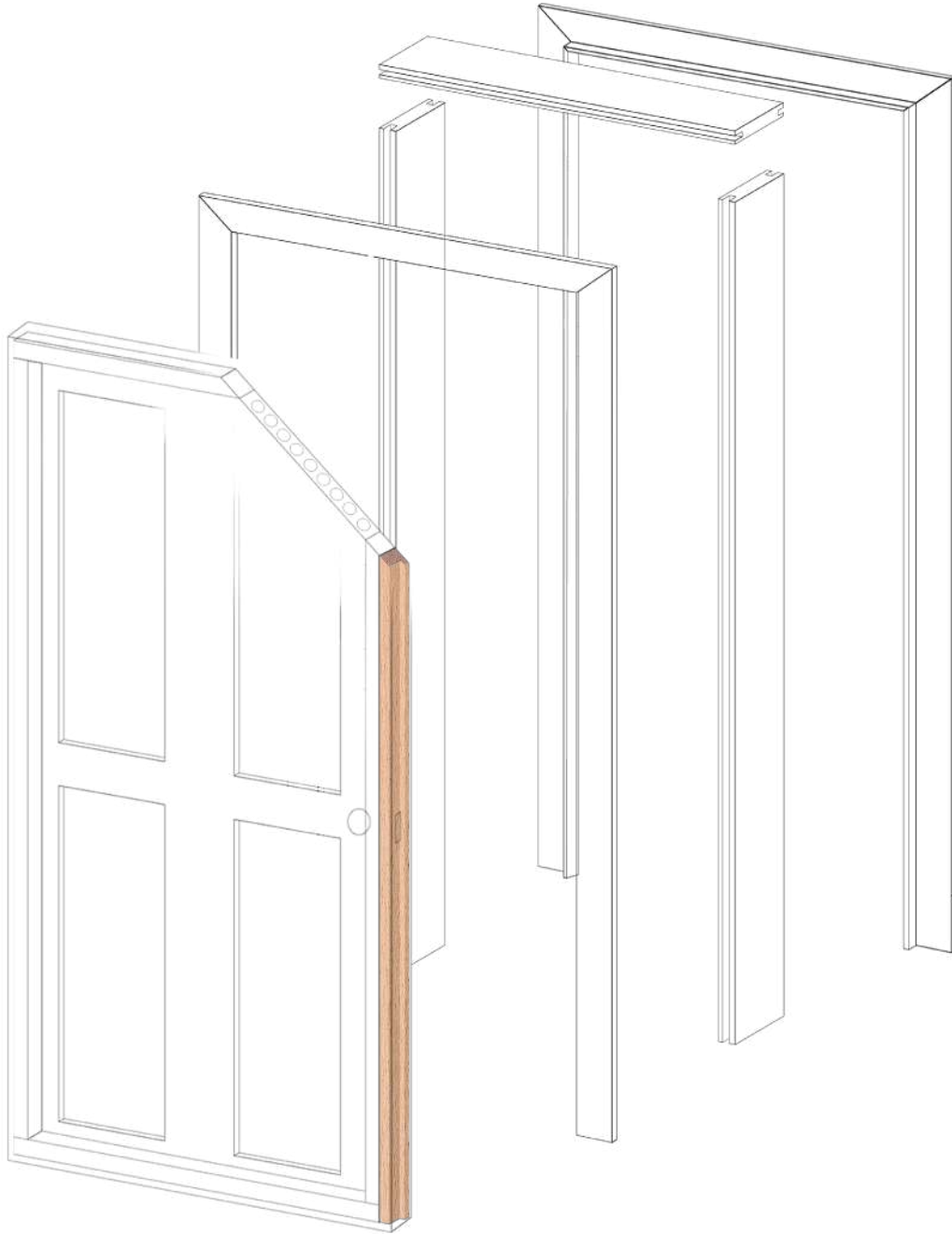
Stile



Property of the Final Product	CTS-LVL Spruce	CTS-LVL Beech	COMPONENTS
Material	Spruce LVL	Beech LVL	Solid beech wood
Thickness [mm]	24, 27, 30, 36, 39, 42, 45, 51, 63, 75	33, 42, 51, 63*	26 (23,8), 38 (36,0), 52 (48,5)
Widths [mm]	15-230	15-230	26 mm thickness: 42, 45, 54, 68, 80, 100, 125 38 mm thickness: 45, 54, 68, 80, 100, 125 52 mm thickness: 49, 68, 80, 100, 125
Lengths [mm]	700-6.000	700-6.000	1.800, 1.900, 2.000, 2.100, 2.200, 2.250, 2.400, 2.750, 3.000 **
Tolerances	Thickness: <u>unsanded:</u> -2/ +0,3 mm <u>1 mm sanded:</u> - 1/ +0,3 mm <u>2 mm sanded:</u> ± 0,3 mm Width: ± 0,3 mm Length: ± 1 mm	Thickness: <u>unsanded:</u> -2/ +0,3 mm <u>1 mm sanded:</u> -1/ +0,3 mm <u>2 mm sanded:</u> ± 0,3 mm Width: ± 0,3 mm Length: ± 1 mm	Thickness: ± 0,3 mm Width: ± 0,5 mm Length: ± 1 mm per meter
Suitability for Fire Doors	Suitable for 30 minutes	Suitable Tested for 60 minutes (approval may be required)	Suitable for 30 minutes
Moisture Content	7-9 %	6-8 %	7-9 %
Density	540 kg/m ³	820 kg/m ³	720 kg/m ³

* CTS-LVL Beech: Other Thicknesses on request

** COMPONENTS: Further Lengths available



Lipping



Property of the Final Product	CTS-LVL Beech	COMPONENTS
Material	Beech LVL	Solid beech wood
Thickness [mm]	33, 42, 51, 63*	26 (23,8), 38 (36,0), 52 (48,5)
Widths [mm]	15-230	26 mm thickness: 42, 45, 54, 68, 80, 100, 125 38 mm thickness: 45, 54, 68, 80, 100, 125 52 mm thickness: 49, 68, 80, 100, 125
Lengths [mm]	700-6.000	1.800, 1.900, 2.000, 2.100, 2.200, 2.250, 2.400, 2.750, 3.000**
Tolerances	Thickness: <u>unsanded:</u> -2 / +0,3 mm <u>1 mm sanded:</u> -1 / +0,3 mm <u>2 mm sanded:</u> ± 0,3 mm Width: ± 0,3 mm Length: ± 1 mm	Thickness: ± 0,3 mm Width: ± 0,5 mm Length: ± 1 mm per meter
Quality Feature	Non-visible quality	4-sided visible quality***
Foiling	Suitable	Suitable
Painting	Suitable Small surface defects possible	Suitable
Moisture Content	6-8 %	7-9 %
Density	820 kg/m ³	720 kg/m ³

* CTS-LVL Beech: Other thicknesses on request

** COMPONENTS: Further lengths available

*** Quality description: COMPONENTS page 17

FRONT



BACK



_Spruce veneers can contain natural wood features such as knotholes, cracks or color variations

_Veneer glue joints visible on board surfaces

_Application for e.g. reinforcement bars for the door industry

_Tolerances refer to a moisture content of 7-9 % ex works

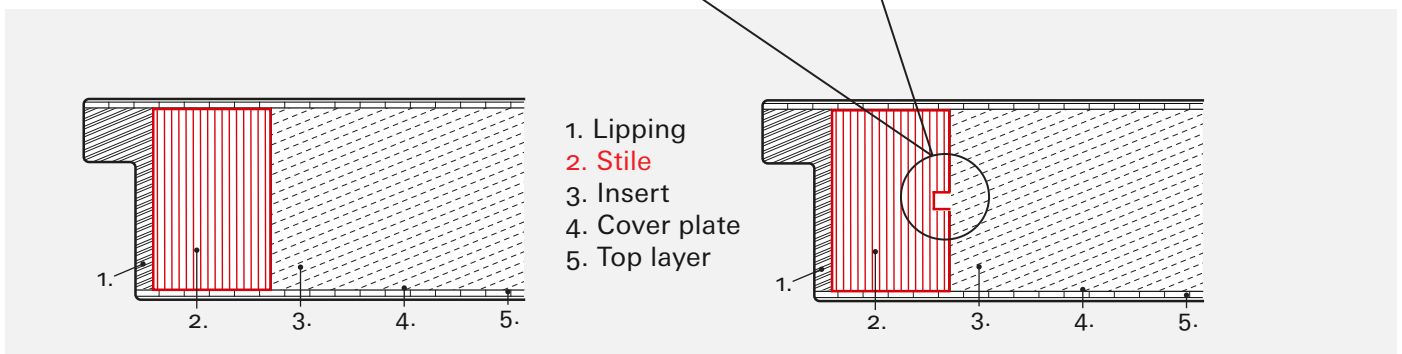
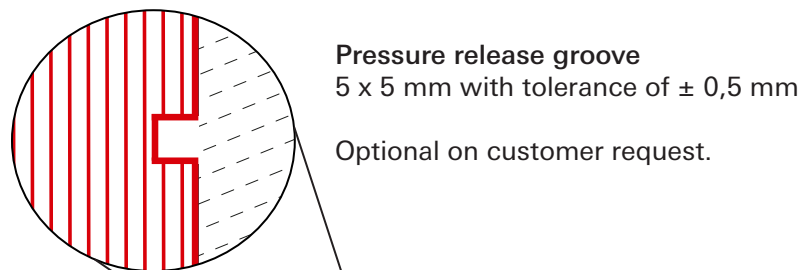
_The swelling and shrinking behavior of higher equilibrium moisture contents must be taken into account

_Largely dimensionally stable

Material	Thickness [mm]	Widths [mm]	Lengths [mm]
Cut-to-size Spruce LVL	21-81*	from 15	700-6.000
Tolerances	± 0,3 mm (planed) +0,3 / -1 mm (equalized)	± 0,3 mm (if required ± 0,1 mm)	± 1 mm

More dimensions available on request.

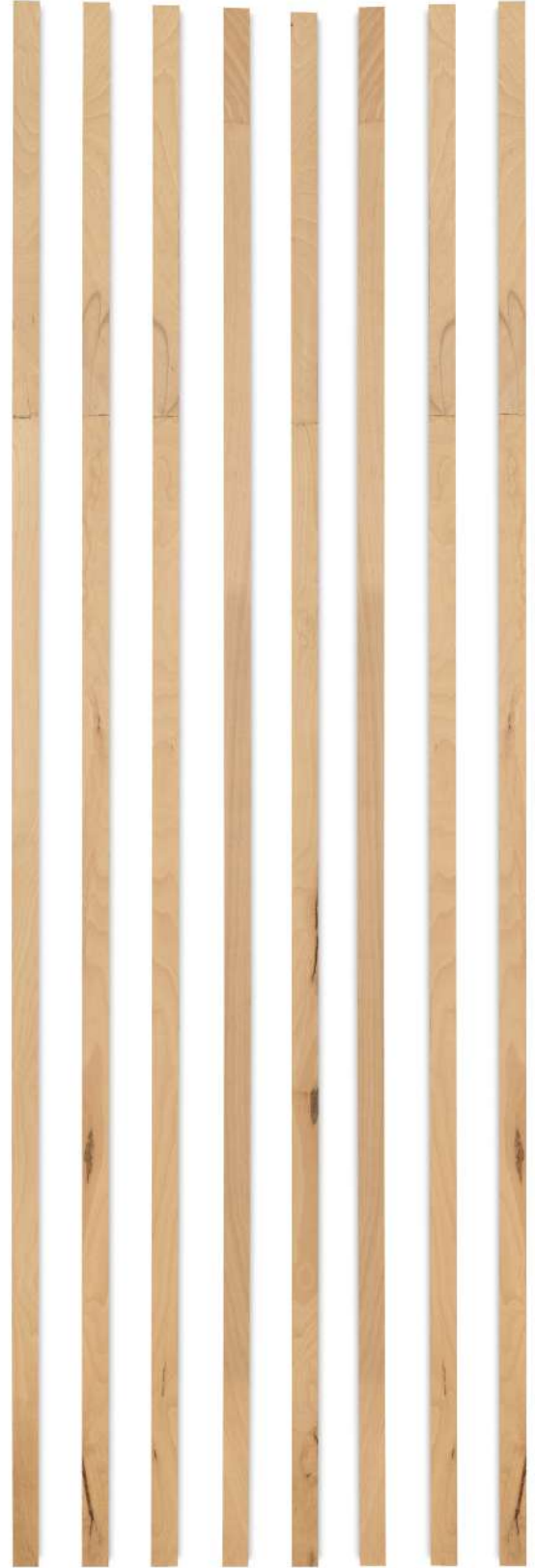
* Unsanded, subsequent sanding possible



FRONT



BACK



_Beech veneers can contain natural wood features such as knotholes, cracks or color variations

_Veneer glue joints visible on board surfaces

_Application for e.g. reinforcement bars for the door industry

_Tolerances refer to a moisture content of 6-8 % ex works

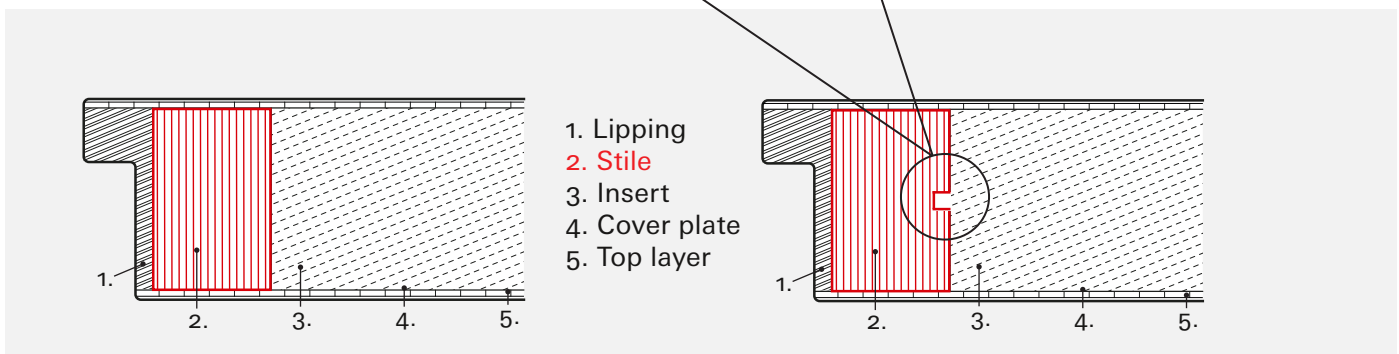
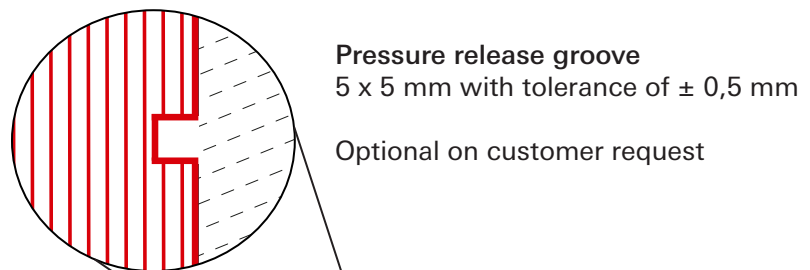
_The swelling and shrinking behavior of higher equilibrium moisture contents must be taken into account

_Largely dimensionally stable.

Material	Thickness [mm]	Widths [mm]	Lengths [mm]
Cut-to-size	21-66*	from 15	700-6.000
LVL Beech			
Tolerances	± 0,3 mm (planed) +0,3 / -1 mm (equalized)	± 0,3 mm (if required ± 0,1 mm)	± 1 mm

More dimensions available on request.

* Unsanded, subsequent sanding possible



Pollmeier DOOR COMPONENTS

Beech. One Wood. So many possibilities.



The production site in Aschaffenburg is Europe's largest solid wood cutting plant.

Please contact us.
We are happy to support you!

sales@pollmeier.com
+49 36926 945 163

Our products are certified according to PEFC.

